

Step-by-step instructions

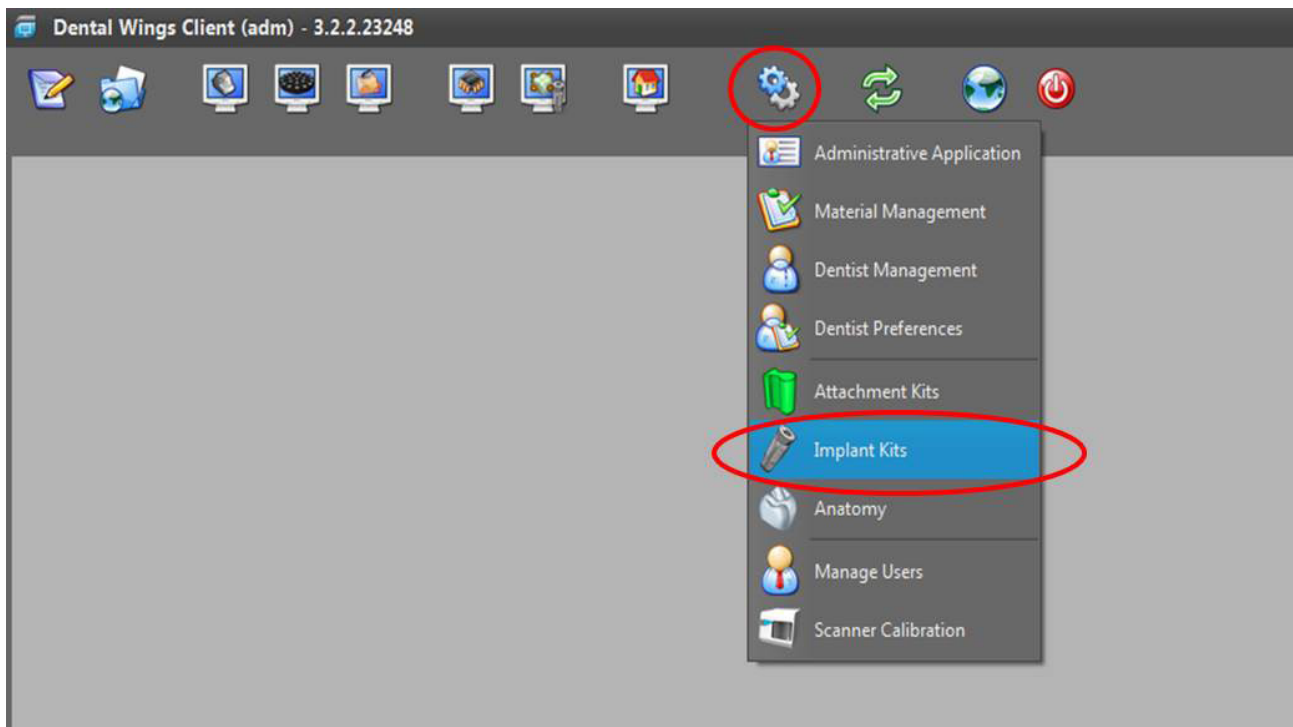
Importing CAD libraries into the Dental Wings CAD software

The previous versions of the CAMLOG® implant kit libraries (incl. from 3rd party providers) should be deleted before importing the new library in order to minimize data errors.

Open the Dental Wings Client



1.1 Choose *Implant Kits* under *Applications*

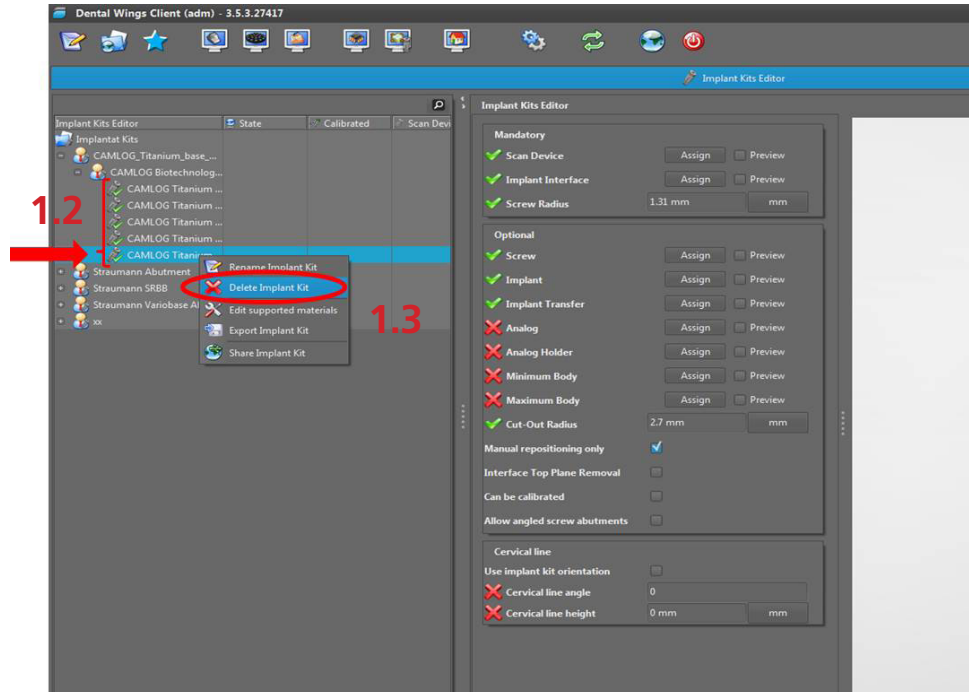


Delete the currently used CAMLOG Implant Kit library

1.2. Right click *CAMLOG Implant Kit* (for example CAMLOG Titanium base)

1.3. Choose *Delete Implant Kit*

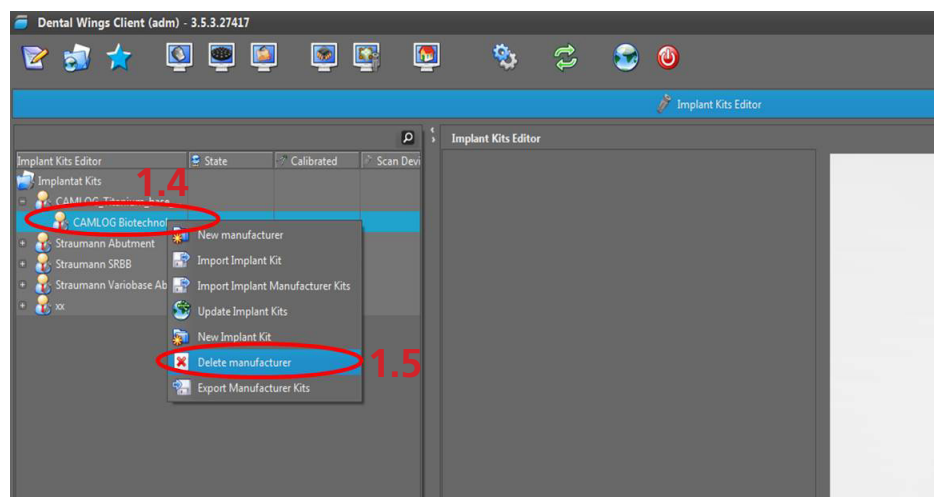
Each Implant Kit must be deleted manually



Delete the manufacturer of the currently used CAMLOG Implant Kit library

1.4 Right click *CAMLOG Implant Kit* (CAMLOG Biotechnologies)

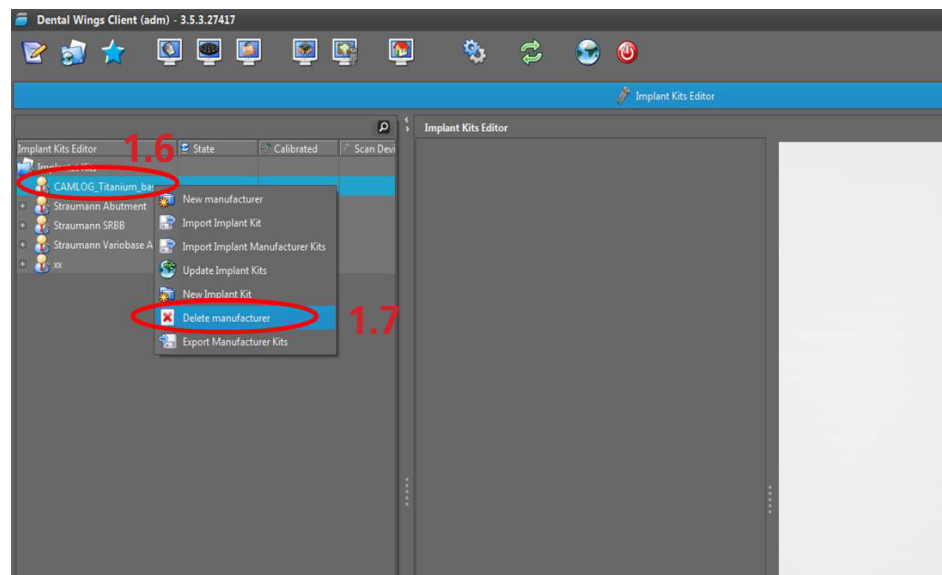
1.5 Choose *Delete manufacturer*



Delete the currently used CAMLOG Implant Kit manufacturer

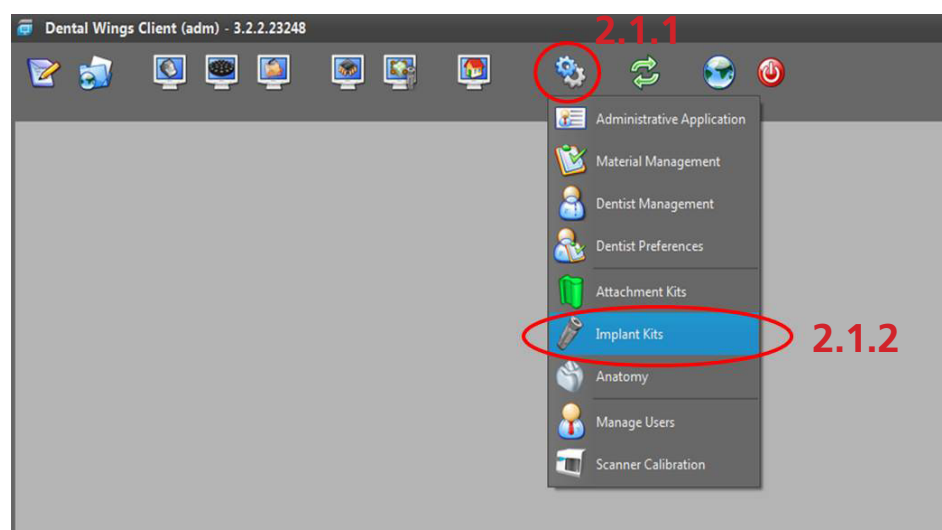
1.6 Right click *CAMLOG Implant Kit* manufacturer

1.7 Choose *Delete manufacturer*

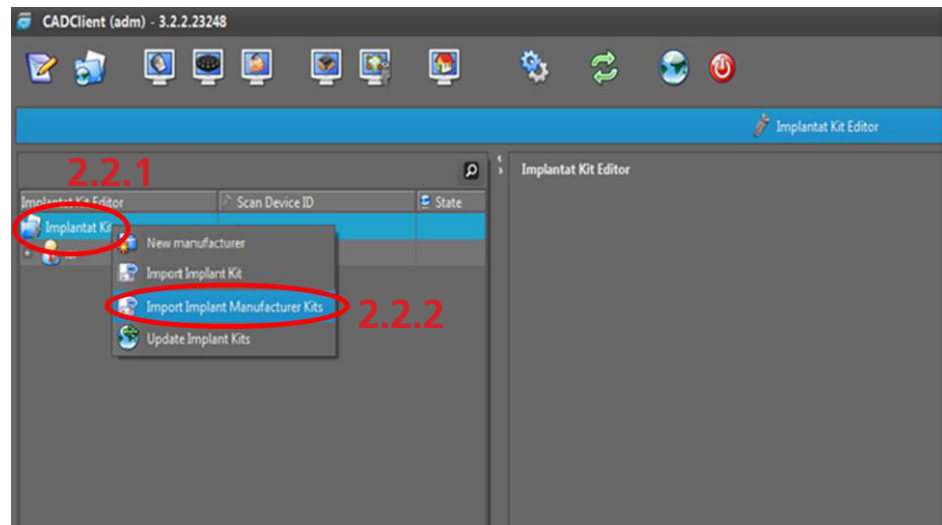


The previous versions of the CAMLOG Implant Kit libraries are now deleted.
The import of the current version of the Implant Kit library can be started.

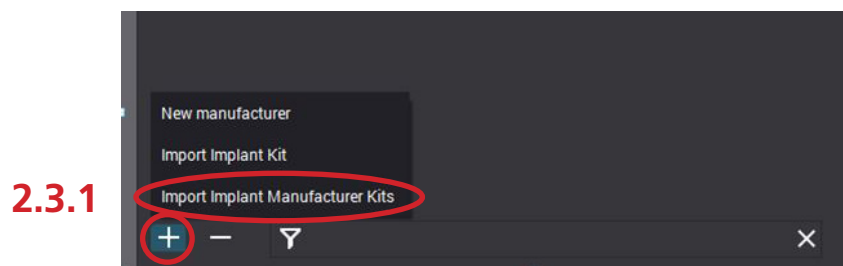
2.1 Select *Implant Kits* under *Applications*



2.2 Right click *Implant Kits* and choose *Import Implant Manufacturer Kits*



2.3 In some newer versions choose the plus sign below down left and choose *Import Implant Manufacturer Kits*



2.4 Select the desired Implant Kit zip-File and choose *Open*

